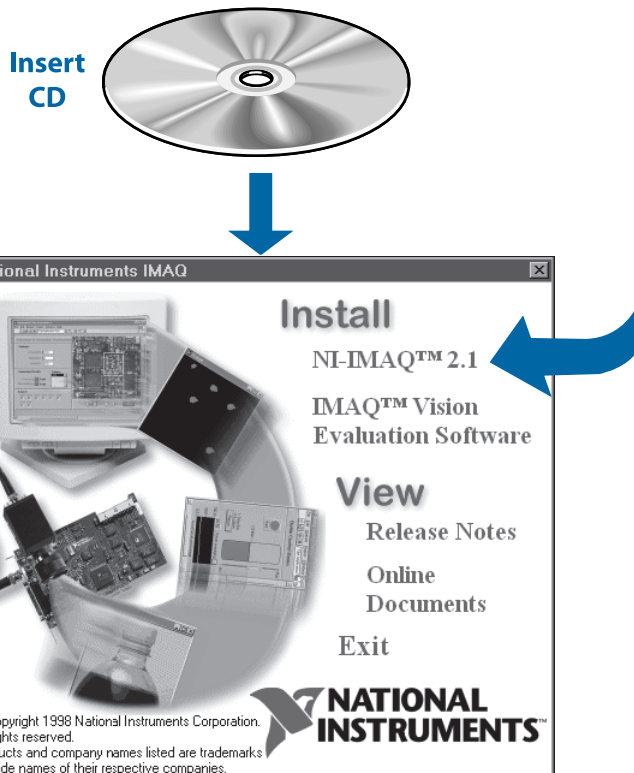


Set up and Test the PCI/PXI-1407

1 Install Your Software



Need more information?
See the *IMAQ PCI/PXI-1407 User Manual*.

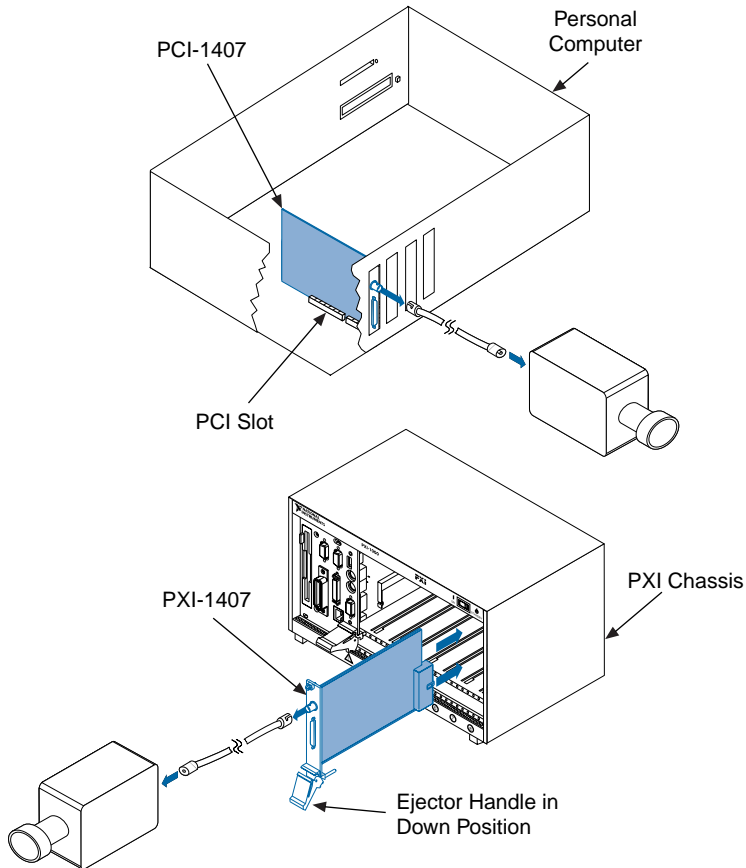
2

Install Your PCI/PXI-1407 and Connect Your Camera



Caution

Turn the power off before installing your hardware.



Note

Follow the instructions in your computer documentation to install the PCI/PXI-1407 device.

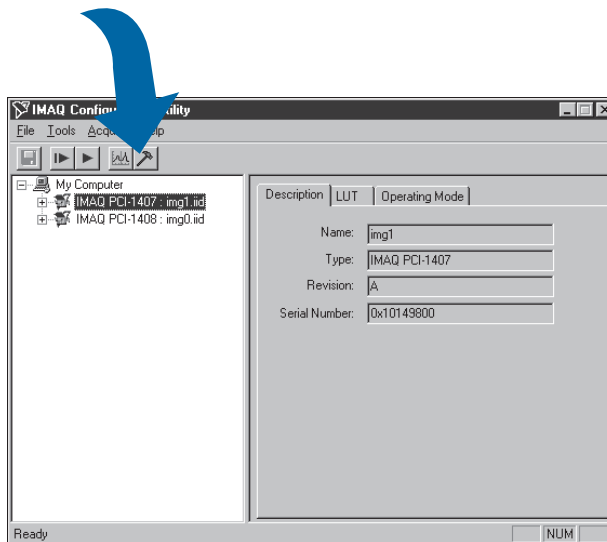
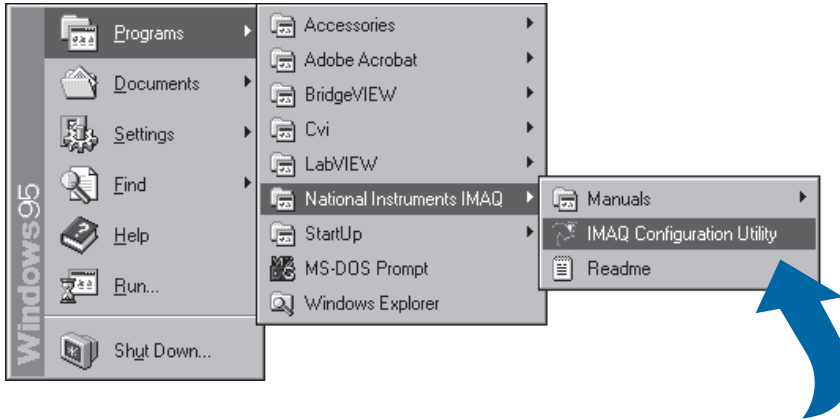


Need more information?

See the *IMAQ PCI/PXI-1407 User Manual*.

3

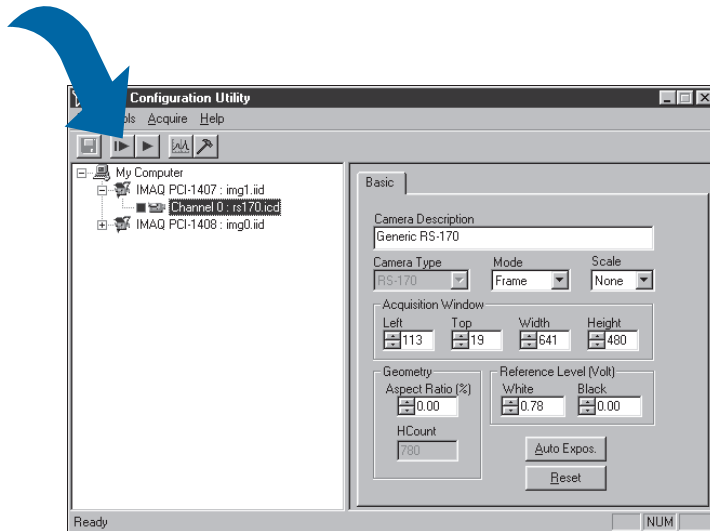
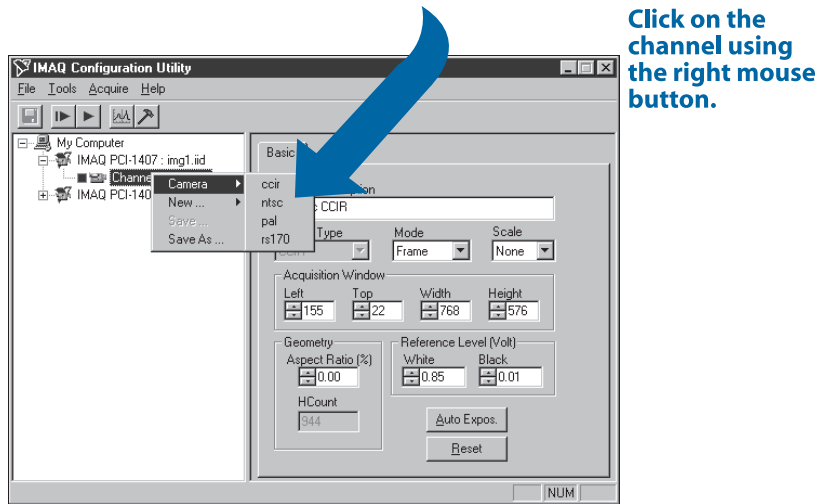
Run the IMAQ Configuration Utility and the IMAQ Diagnostics



Need more information?
See the [IMAQ Configuration Utility online help](#).

4

Select the Camera File and Acquire an Image



**Need more information?
See the IMAQ Configuration Utility online help.**

BridgeVIEW™, CVI™, IMAQ™, LabVIEW™, NI-DAQ™, NI-IMAQ™, and StillColor™ are trademarks of National Instruments Corporation. Product and company names are trademarks or trade names of their respective companies.

© Copyright 1998 National Instruments Corporation. All rights reserved.



322159A-01

Dec98